

Technical Memorandum

May 20, 2022

Project# 27310.0

To: James Philp
Jackson County Roads Department
200 Antelope Road
White City, Oregon 97503

From: Matt Bell, Amy Griffiths, EIT, Susan Wright, PE, Kittelson & Associates, Inc.

Project Jackson County Transportation System Plan Update

Subject: Draft Tech Memo #2: Incorporate the RVATP (Task 3.1)

INTRODUCTION

This memorandum summarizes information from the Rogue Valley Active Transportation Plan (RVATP) and identifies how it will be incorporated into the Jackson County Transportation System Plan (TSP) Update. The information provided in this memorandum is intended to identify and address potential discrepancies between the two plans and identify potential projects for inclusion in the TSP update.

ROGUE VALLEY ACTIVE TRANSPORTATION PLAN

The Rogue Valley Active Transportation Plan (RVATP) is a long-range, strategic framework that identifies the regional networks for active transportation in the Rogue Valley Metropolitan Planning Organization (MPO) boundary. The RVATP is a component of the RVMPO Regional Transportation Plan (RTP) that sets the direction for the design and implementation of the regional active transportation network. The active transportation network provides connections between cities, transit, activity centers, and major employment and housing locations for people walking, biking, and rolling.

The RVATP contains three elements that could be incorporated into the Jackson County TSP. The elements include the regional active transportation network and network classifications, the high priority investments, and the refinement plans and projects. The RVATP contains a fourth element that includes conceptual designs for prioritized projects. The designs were not adopted as part of the RVATP; however, they were vetted through the process and could be incorporated into the TSP. The following sections identify information from the RVATP on each element and indicates how they could be incorporated into the TSP.

Regional Active Transportation Network and Network Classifications

This section summarizes information on the regional active transportation network and network classifications in the RVATP as well as information on the bicycle route designations in the TSP. This section also identifies potential updates to the TSP to incorporate the active transportation network, network classifications, and associated design guidance. The potential updates will be refined based on input from the project team.

RVATP Network Classifications

The RVATP identifies the regional active transportation network for the RVMPO area. The regional active transportation network is made up of streets and multiuse paths and is defined by three classifications. The classifications describe the function of each facility in the network and correspond to design guidance on how to achieve low-stress facilities for people walking, biking, and rolling. The following classifications and definitions are identified in the RVATP.

- **Regional Routes** are the highest functional classification for the active transportation network. These routes provide the highest quality facilities and the greatest level of comfort (lowest level of traffic stress, LTS 1), and appeal to the widest cross section of users. To achieve LTS 1 on regional routes, separated facilities must be provided for major streets (higher volumes, higher speeds) and along minor streets (lower volume, lower speeds), traditional facilities (shoulders or bike lanes/sidewalks) may be acceptable depending on the roadway context.
- **Connector Routes** serve as secondary and/or shorter, regionally significant connections between the regional routes and high-priority destinations. Connector routes are also desired to be high quality and comfortable for most users (level of traffic stress 2, or LTS 2) and link to major employers, transit hubs, schools, and other regional destinations. To achieve LTS 2 on connector routes, traditional facilities (shoulders or bike lanes/sidewalks) may be acceptable depending on the roadway context.
- **Supporting Routes** are regionally significant connections with similar design guidance and policy implementation (LTS 2) of connector routes.

The RVATP also recognizes the need for **Local Routes** but does not identify them. Instead, the RVATP indicates that existing and future local routes identified in local TSPs should be integrated into the regional active transportation network. *Attachment A contains Figure 1 from the RVATP, which illustrates the regional active transportation network and network classifications.*

TSP Bicycle Route Designations

The Jackson County TSP includes bicycle route designations for select roadways throughout the County, including the RVMPO area. The designations are intended to help define the type of bicycle treatments planned for each roadway. Per the TSP, the designations include:

- **Non-Designated Routes** are roads without bicycle facilities that are not signed or designated bicycle routes; however, bicycles may still use these routes.
- **Shared Roadways** are roads without bicycle lanes or shoulders that are designated bicycle routes. This designation may influence how the County signs, maintains, or makes other decisions with regard to these facilities.
 - Shared Roadways are most commonly acceptable along roadways where the average daily traffic (ADT) is less than 400 vehicles per day in rural areas and 3,000 vehicles per day in urban areas or where vehicular travel speeds and volumes allow cyclists to comfortably and conveniently "share the road" with motorists. In rural areas, "Share the Road" or "Bikes in Road" signs can be used to remind drivers to watch for bicyclists on roadways without on-street bicycle lanes. In urban areas, shared-lane pavement markings, or sharrows, can be used. Sharrows remind motorists of the presence of bicycles and indicate to cyclists where to safely ride within the roadway.
- **Bikeways** include both shoulder bikeways in rural areas and bike lanes in urban areas. Jackson County's current roadway standards require 4-foot shoulders along rural local streets (Local Street C), 5-foot shoulders along rural minor collectors, and 6-foot shoulders along rural major collectors and arterials.
 - Shoulder bikeway designated routes should provide space for cyclists to travel outside of the vehicle travel lane where warranted. These could include continuous shoulder bikeways on both

sides of the roadway ranging from 3-foot to 6-foot wide, depending upon the rural character of the area, but could also include uphill climbing lanes only, intermittent shoulders in low visibility areas, or bike pull-out areas. Shoulder bikeway designated routes typically have higher speeds and traffic volumes than routes where a shared roadway designation would be appropriate in both directions for the entire length of the roadway.

- **Enhanced Bikeways** include a variety of different facility types and treatments and are intended to provide more separation and protection for cyclists from vehicles than a standard shoulder bikeway or bike lane. In rural areas, treatments include additional shoulder width or a parallel shared-use path. In urban areas, enhanced bikeway treatments include buffered bike lanes, cycle tracks or protected bikeways, or parallel shared-use path.

The TSP includes projects on all roadways designated as bikeways or enhanced bikeways and a few designated as shared roadways. The projects are included in either the Roadway Plan or the Bicycle and Pedestrian Plan based on the nature of the improvements. *Attachment B contains Figure 19 from the Jackson County TSP, which illustrates the bicycle route designations.*

Potential TSP Updates

There are several options for incorporating the RVATP regional active transportation network and network classifications into the TSP. The following summarizes potential options for the TSP Update.

- **Create a regional overlay** – Create an overlay that indicates if a shared roadway, bikeway, or enhanced bikeway is on the regional active transportation network. The overlay should also indicate if the route is a regional, connector, or supporting route. The TSP should be updated to include the overlay on Figure 19 Bicycle Route Designations (at a minimum) and to include guidance on what the overlay means for facility type and design.
- **Update the bicycle route designations** – Update the descriptions of the bicycle route designations in the TSP to reflect guidance in the RVATP on level of traffic stress, including LTS 1 on all regional routes and LTS 2 on all connector and supporting routes. The descriptions should also be updated to reflect more recent design guidance on the preferred bicycle/pedestrian facility types and widths by route designation.
- **Change the bicycle route designations** – Change the bicycle route designations in the TSP to better align with the classifications in the RVATP, particularly where the TSP designations are significantly out of line with the RVATP classification. For example:
 - All non-designated routes, shared roadways, and bikeways with a regional route classification should be increased to an enhanced bikeway
 - All non-designated routes and shared roadways with a connector route designation should be increased to a bikeway
 - All non-designated routes with a supporting route designation should be evaluated for potential increases in the designation.
- **Update the project tables** – update the project tables in the TSP to include projects on all new bikeways and enhanced bikeways, as applicable. The projects should indicate if they are located on the regional active transportation network, if they are subject to a refinement plan, and/or if a conceptual design plan has been developed for the projects. Additional information on the refinement plans and conceptual design plans is provided below.

Table 1 in Attachment C identifies the state and county facilities on the active transportation network with regional and connector route classifications. Table 1 identifies the facility, RVATP classification, and TSP bicycle route designation. Table 1 also indicates if the TSP should be updated to reflect discrepancies in the RVATP classification and TSP designations.

High Priority Investments

The RVATP includes a prioritized list of needs to help local agencies and the RVMPO determine where to allocate available money to address the most important gaps in the system. This section summarizes the prioritization process and presents the results for Jackson County.

- **Prioritization Process** – The prioritization process considered several factors, including the following:
 - *Safety* – reported crashes
 - *Existing Conditions* – the current physical and operational characteristics
 - *Connectivity* – the degree to which residents can travel continuously through the community
 - *Equity* – the degree to which improvements are distributed evenly to groups in the community
 - *Opportunity* – the ability of an agency to take advantage of resources that can support project implementation
- **Prioritization Process Results** – The prioritization process resulted in a list of regionally significant active transportation routes and associated scoring values. The routes were then defined as high, medium, and low priority based on their quantitative scoring values and refined through input received from the project team.

Table 1 in Attachment C identifies the priorities of the regional and connector routes on the active transportation network per the RVATP. Table 1 also identifies the priority of any related or relevant projects in the TSP (Tier 1, Tier 2, Tier 3). Regardless of the priorities, the RVATP encourages local jurisdictions, such as Jackson County, to take advantage and couple local improvements with the projects identified in the RVATP to further advance their respective local active transportation systems.

Potential TSP Updates

The following summarizes potential options for the TSP update.

- **Update existing projects** – Update the priorities of existing projects in the TSP to reflect the priorities in the RVATP.
 - Projects identified as high priority in the RVATP will be considered for the Tier 1 project list.
 - Projects identified as medium and low priority will be considered for the Tier 2 and Tier 3 project list as applicable.

Table 1 in Attachment C identifies potential updates to the TSP, including changes to the priorities of existing projects as applicable.

Refinement Plans and Project Development

The RVATP indicates that while all routes will require further planning and concept development, refinement plans should be developed to advance project development for seven routes. Of the seven routes, five are located on County facilities and one is located on a private facility.

- **Route 1:** Jacksonville to South Medford (Path connection, including on street improvements on Hueners Lane, Madrona Lane, and Dakota avenue)
- **Route 4:** E Pine Street (9th Street to Hamrick Road)
 - The segment of E Pine Street from 9th Street to 10th Street is a City of Medford facility.
- **Route 27 and 28:** Touvelle Road and Little Butte Creek shared use paths
 - Touvelle Road is a private road.

- **Route 37:** Ashland greenway extension (Dead Indian Memorial Road to Emigrant Lake)
- **Route 60:** McAndrews Road (Ross Lane to Town Center Drive)
 - The segment of McAndrews Road east of Sweet Road is a City of Medford facility.

Potential TSP Updates

The potential option for the TSP update is to add refinement plan projects to the TSP as applicable. *Table 1 in Attachment C identifies potential updates to the TSP, including the development of refinement plans for these key active transportation routes.*

Conceptual Designs for Prioritized Projects

Although not formally adopted as part of the RVATP, conceptual design plans were developed for ten potential projects that address critical network needs and barriers. Of the ten projects, five are located on State and County facilities. The following projects were developed to a 5% conceptual design-level with recommended cross section illustrations and accompanying planning-level cost estimates.

- **Route 3A:** OR62 (Crater Lake Highway) – Construct a shared-use path along the north side of the roadway between OR99 (N Riverside Avenue) to Bullock Road.
- **Route 3B:** OR62 (Crater Lake Highway) – Construct a shared-use path on the north side of the roadway between the existing terminus of the OR62 shared-use path (just west of Starbucks driveway) and Delta Waters Road.
- **Route 4:** E Pine Street - The primary and long-term solution is to construct a shared-use path along the north side of the roadway – consistent with the 2015 I-5 Exit 33 (Central Point) Interchange Area Management Plan (IAMP). As a potential alternative solution, the RVATP recommends restriping the roadway to provide buffered bike lanes/separated bike lanes on both sides of the roadway as interim solution until fully a separated facility can be constructed.
- **Route 38:** OR 99 (S Pacific Highway) - Reconfigure roadway to include four 11-foot travel lanes, one 12-14 foot two-way left-turn (TWLT) lane, 11-foot turn lanes (where present), sidewalks on the west side, and a shared-use path on the east side of the roadway to provide separated walking and biking accommodations.
- **Route 77:** W Main Street - Construct a shared-use path along the north side of W Main Street between Oak Grove Road to Hanley Road (OR238).

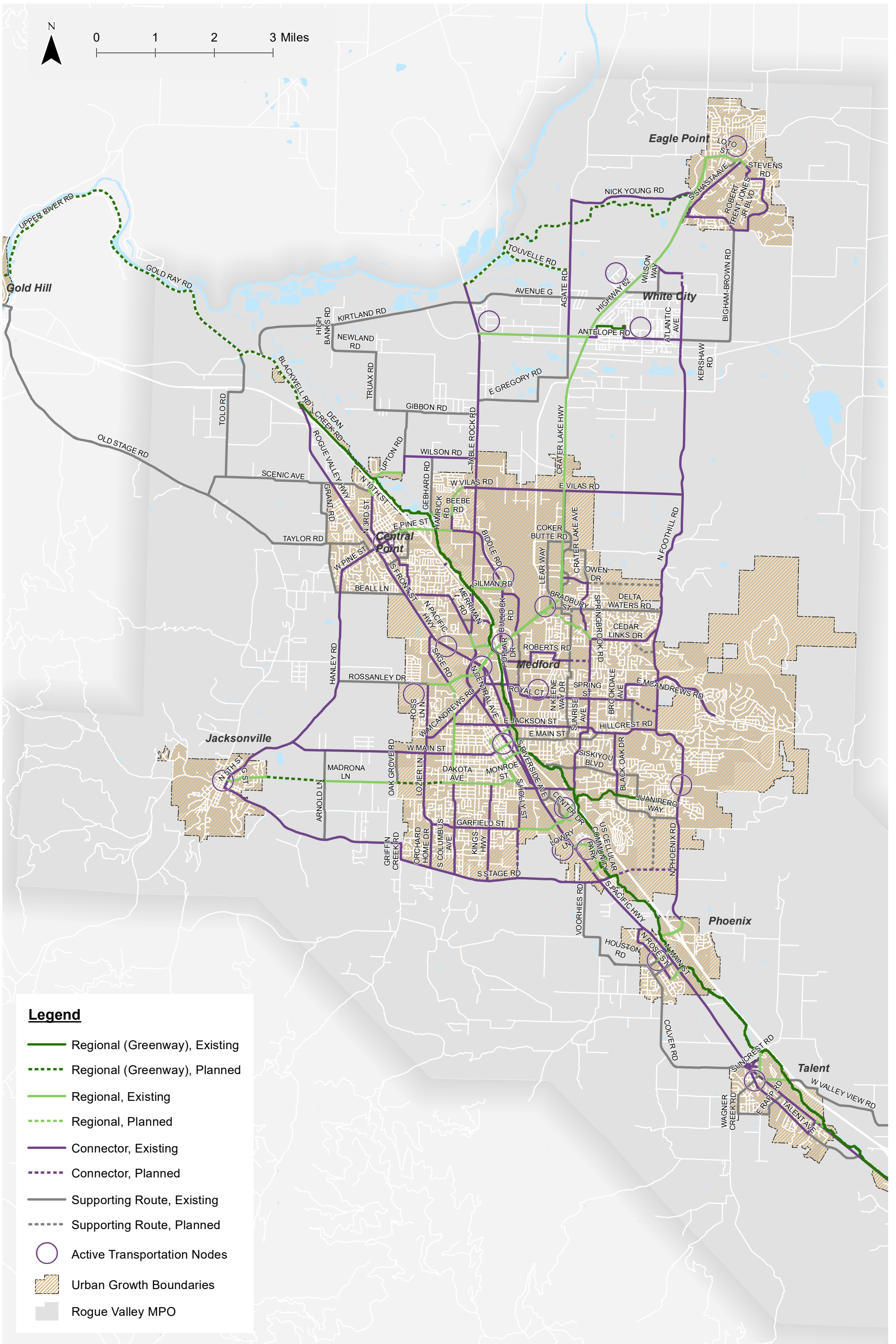
Potential TSP Updates

The potential option for the TSP update is to incorporate the conceptual design plans in the TSP as applicable. *Table 1 in Attachment C identifies potential updates to the TSP, including the addition of the RVATP concepts.*

ATTACHMENTS

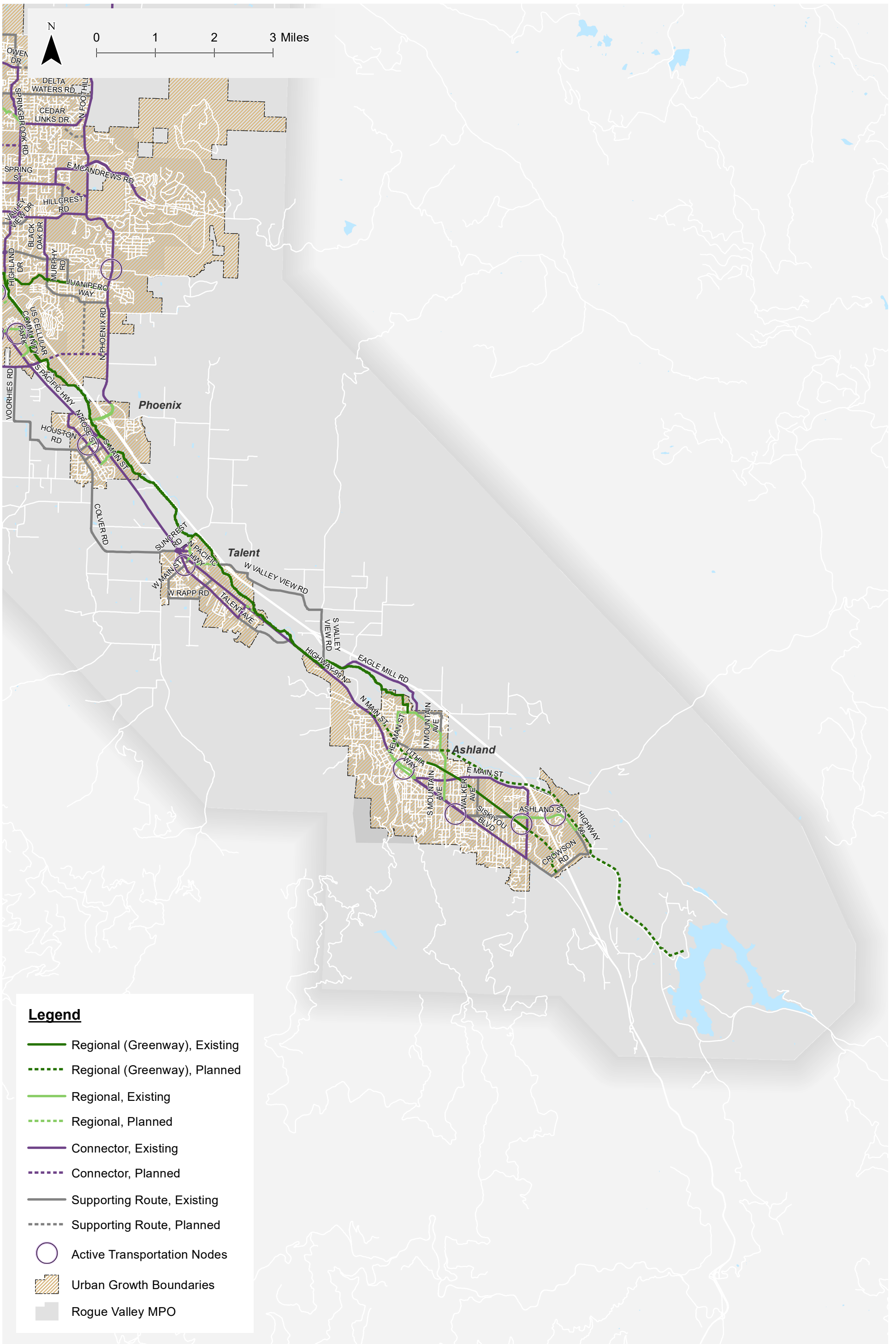
- A. Regional Active Transportation Network
- B. Bicycle Route Designations
- C. RVATP Route Summary Table

Appendix A
Regional Active Transportation Network

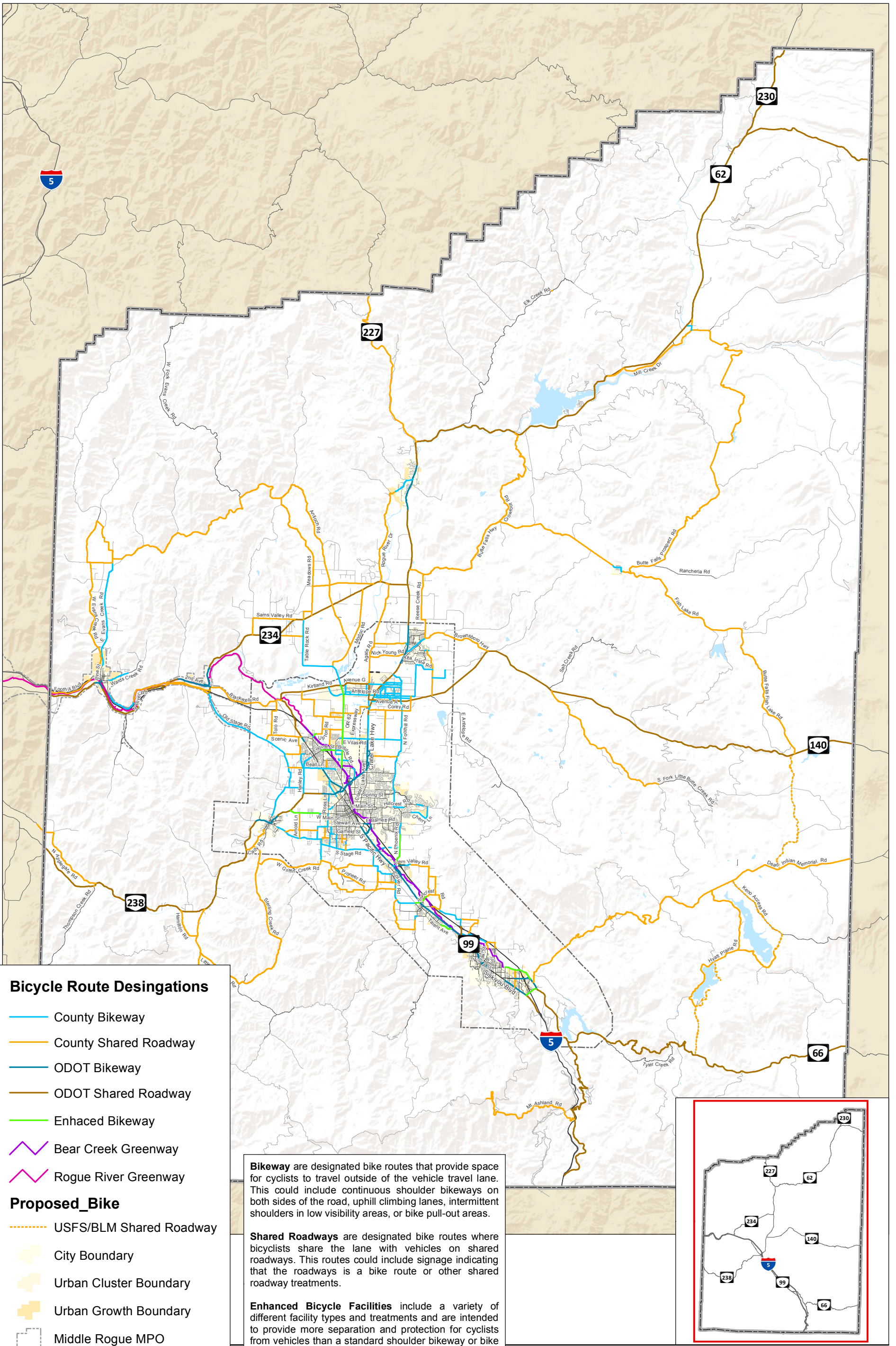


Legend

- Regional (Greenway), Existing
- - - Regional (Greenway), Planned
- Regional, Existing
- - - Regional, Planned
- Connector, Existing
- - - Connector, Planned
- Supporting Route, Existing
- - - Supporting Route, Planned
- Active Transportation Nodes
- Urban Growth Boundaries
- Rogue Valley MPO



Appendix B
Bicycle Route Designations



Bicycle Route Designations

- County Bikeway
- County Shared Roadway
- ODOT Bikeway
- ODOT Shared Roadway
- Enhanced Bikeway
- Bear Creek Greenway
- Rogue River Greenway

Proposed_Bike

- - - USFS/BLM Shared Roadway
- City Boundary
- Urban Cluster Boundary
- Urban Growth Boundary
- Middle Rogue MPO
- Rogue Valley MPO
- County Boundary

Bikeway are designated bike routes that provide space for cyclists to travel outside of the vehicle travel lane. This could include continuous shoulder bikeways on both sides of the road, uphill climbing lanes, intermittent shoulders in low visibility areas, or bike pull-out areas.

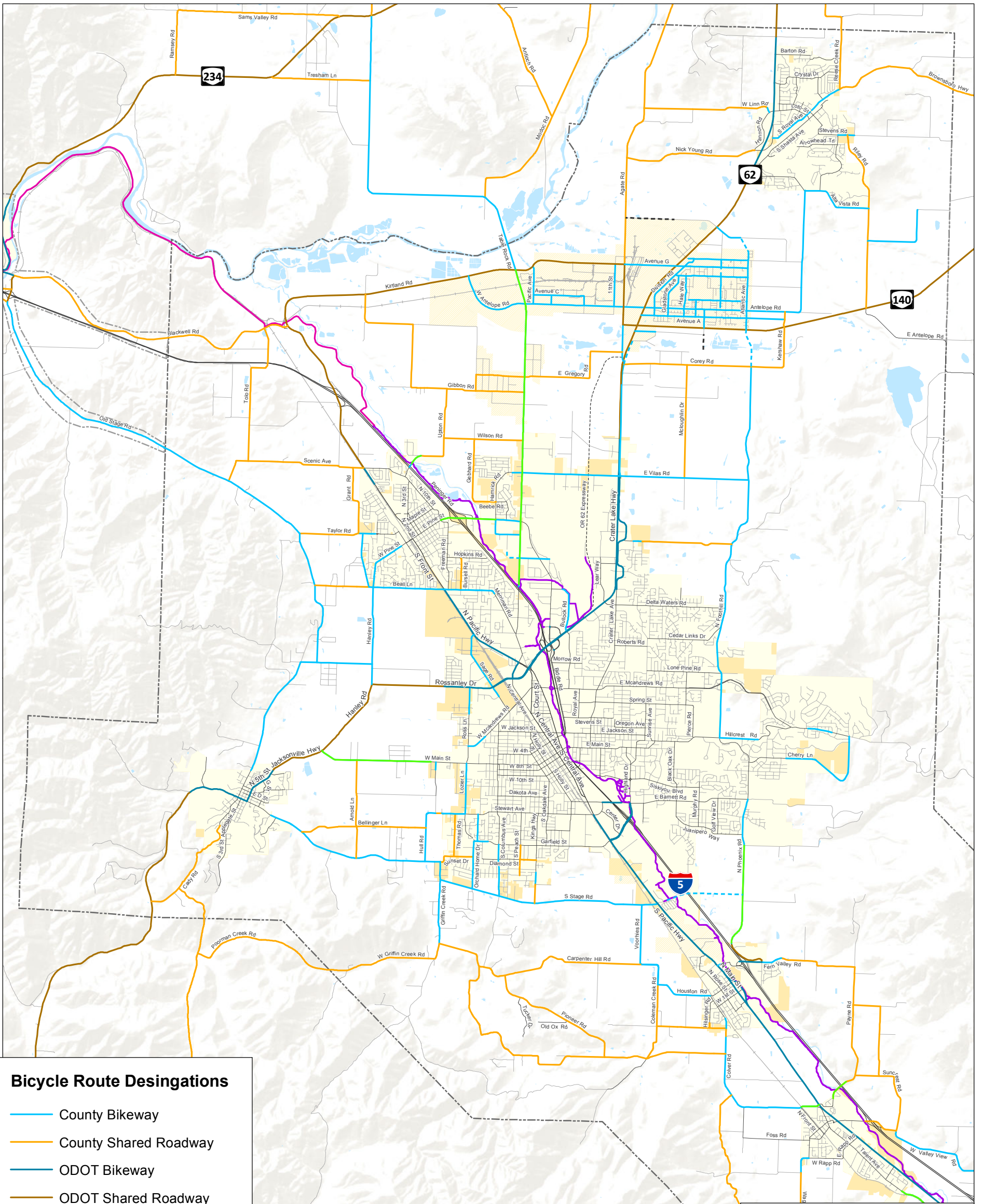
Shared Roadways are designated bike routes where bicyclists share the lane with vehicles on shared roadways. This routes could include signage indicating that the roadways is a bike route or other shared roadway treatments.

Enhanced Bicycle Facilities include a variety of different facility types and treatments and are intended to provide more separation and protection for cyclists from vehicles than a standard shoulder bikeway or bike lane. In rural areas, treatments include additional shoulder width or a parallel shared-use path. In urban areas, enhanced bikeway treatments include buffered bike lanes, cycle tracks or protected bikeways, or parallel shared-use path.

**Bicycle Route Designations
Jackson County, OR**

**Figure
19A**

H:\projects\18018 - Jackson County TSP Update\GIS\Draft TSP19_Bicycle Route Designation.mxd - mbell - 1:58 PM 5/9/2017



Bicycle Route Designations

- County Bikeway
- County Shared Roadway
- ODOT Bikeway
- ODOT Shared Roadway
- Enhanced Bikeway
- Bear Creek Greenway
- Rogue River Greenway

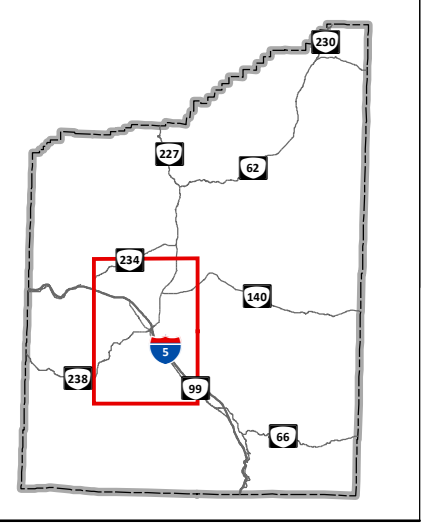
Proposed_Bike

- - - USFS/BLM Shared Roadway
- City Boundary
- Urban Cluster Boundary
- Urban Growth Boundary
- Middle Rogue MPO
- Rogue Valley MPO
- County Boundary

Bikeway are designated bike routes that provide space for cyclists to travel outside of the vehicle travel lane. This could include continuous shoulder bikeways on both sides of the road, uphill climbing lanes, intermittent shoulders in low visibility areas, or bike pull-out areas.

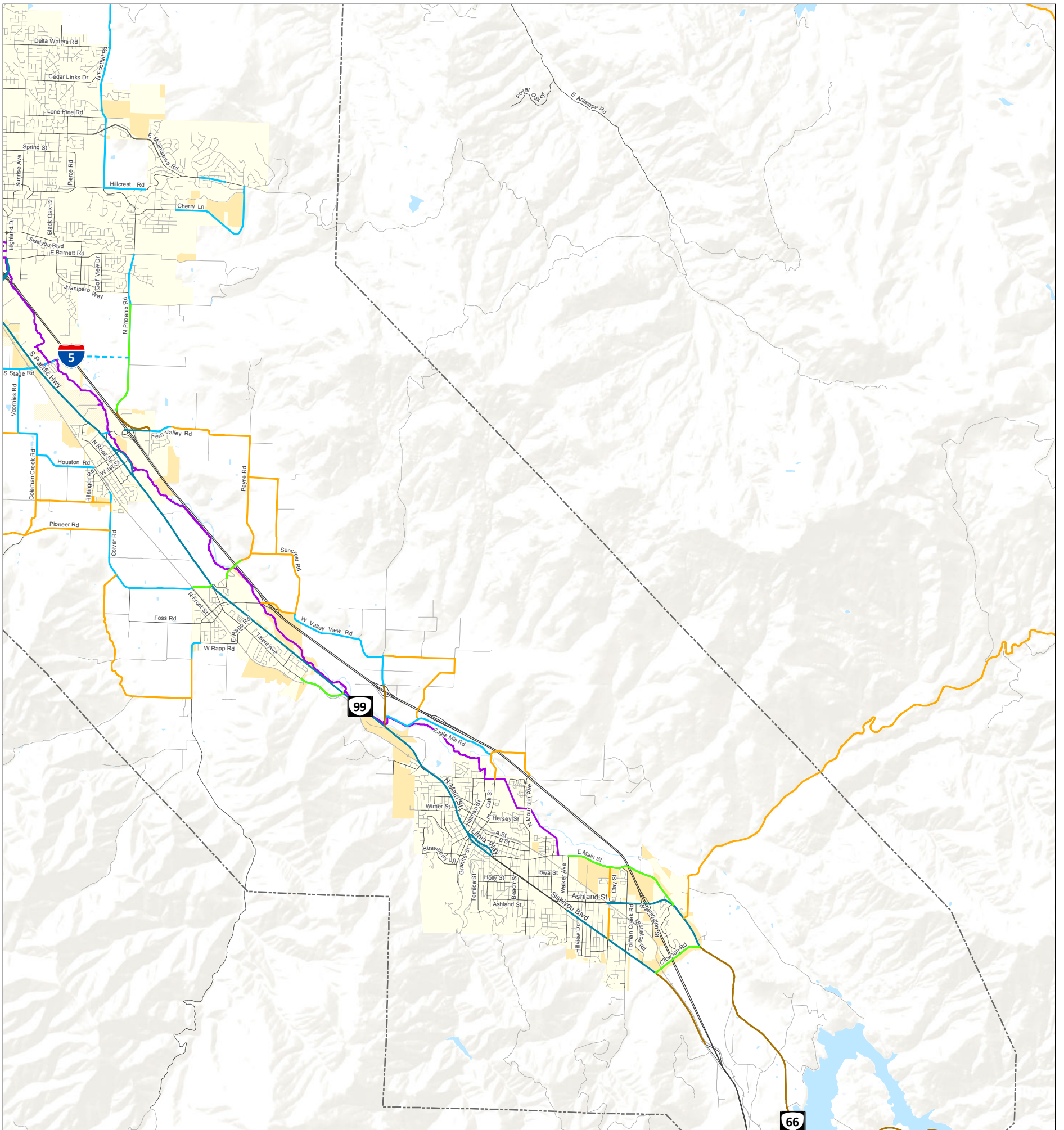
Shared Roadways are designated bike routes where bicyclists share the lane with vehicles on shared roadways. This routes could include signage indicating that the roadways is a bike route or other shared roadway treatments.

Enhanced Bicycle Facilities include a variety of different facility types and treatments and are intended to provide more separation and protection for cyclists from vehicles than a standard shoulder bikeway or bike lane. In rural areas, treatments include additional shoulder width or a parallel shared-use path. In urban areas, enhanced bikeway treatments include buffered bike lanes, cycle tracks or protected bikeways, or parallel shared-use path.



Bicycle Route Designations Jackson County, OR

Figure 19B



Bicycle Route Designations

- County Bikeway
- County Shared Roadway
- ODOT Bikeway
- ODOT Shared Roadway
- Enhanced Bikeway
- Bear Creek Greenway
- Rogue River Greenway

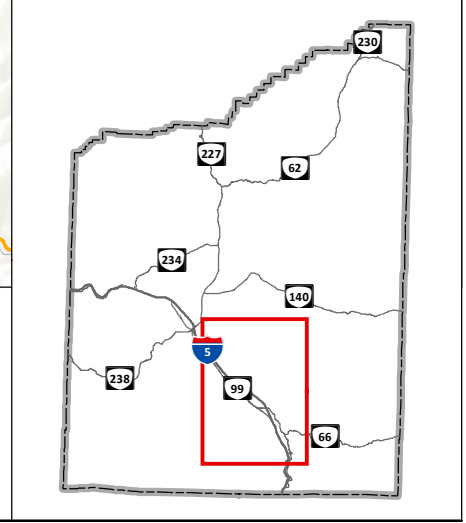
Proposed_Bike

- - - USFS/BLM Shared Roadway
- City Boundary
- Urban Cluster Boundary
- Urban Growth Boundary
- Middle Rogue MPO
- Rogue Valley MPO
- County Boundary

Bikeway are designated bike routes that provide space for cyclists to travel outside of the vehicle travel lane. This could include continuous shoulder bikeways on both sides of the road, uphill climbing lanes, intermittent shoulders in low visibility areas, or bike pull-out areas.

Shared Roadways are designated bike routes where bicyclists share the lane with vehicles on shared roadways. This routes could include signage indicating that the roadways is a bike route or other shared roadway treatments.

Enhanced Bicycle Facilities include a variety of different facility types and treatments and are intended to provide more separation and protection for cyclists from vehicles than a standard shoulder bikeway or bike lane. In rural areas, treatments include additional shoulder width or a parallel shared-use path. In urban areas, enhanced bikeway treatments include buffered bike lanes, cycle tracks or protected bikeways, or parallel shared-use path.



**Bicycle Route Designations
Jackson County, OR**

**Figure
19C**

H:\proj\18018 - Jackson County TSP Update\18018 Draft TSP\19_Bicycle Route Designation.mxd - mbell - 1:58 PM 5/3/2017

Appendix C
RVATP Route Summary Table

ATTACHMENT C - RVATP ROUTE SUMMARY TABLE

Table 1: RVATP Route Summary Table

RVATP Route	Roadway	Extents	RVATP Classification	TSP Bicycle Route Designation	RVATP Priority	TSP Project(s)?	TSP Update Needs
Regional Routes							
1	Madrona Lane	Arnold Lane to Oak Grove Road	Regional	Non-Designated	High	No	<ul style="list-style-type: none"> Change TSP bicycle route designation to enhanced bikeway Add refinement plan project to TSP
1	Shared-use Path	Jacksonville City limits to Arnold Lane	Regional	Non-Designated	High	No	<ul style="list-style-type: none"> Add path to bicycle route designation map Add refinement plan project to TSP
2	Sage Road	Rossanley Drive to new shared-use path	Regional	County Bikeway	Medium	Yes, R97 (N/A City)	<ul style="list-style-type: none"> Change TSP bicycle route designation to enhanced bikeway Review project approach in TSP and update as necessary Add refinement plan project to TSP
3	OR 62	Linn Road to Shasta Avenue	Regional	ODOT Bikeway	High	No	<ul style="list-style-type: none"> Change TSP bicycle route designation to enhanced bikeway Review LTS and add project to TSP as necessary
3	OR 62	Shasta Avenue to Dillon Way	Regional	ODOT Shared Roadway	High	No	<ul style="list-style-type: none"> Change TSP bicycle route designation to enhanced bikeway Review LTS and add project to TSP as necessary
3	OR 62	Dillon Way to OR 99	Regional	ODOT Bikeway	High	No	<ul style="list-style-type: none"> Change TSP bicycle route designation to enhanced bikeway Add RVATP concept to TSP
3	OR 238 (Rossanley Drive)	OR 99 to Ross Lane	Regional	ODOT Bikeway	High	No	<ul style="list-style-type: none"> Change TSP bicycle route designation to enhanced bikeway

RVATP Route	Roadway	Extents	RVATP Classification	TSP Bicycle Route Designation	RVATP Priority	TSP Project(s)?	TSP Update Needs
							<ul style="list-style-type: none"> Review LTS and add project to TSP as necessary
4	E Pine Street	10 th Street to Hamrick Road	Regional	County Enhanced Bikeway	High	Yes, U40 (Tier 2)	<ul style="list-style-type: none"> Review project approach in TSP and update as necessary Add refinement plan project to TSP Add RVATP concept to TSP
5	Upton Road	I-5 to Peninger Road	Regional	County Bikeway	Medium	No	<ul style="list-style-type: none"> Change TSP bicycle route designation to enhanced bikeway Review LTS and add project to TSP as necessary
5	Upton Road	Peninger Road to Upton Road (east-west)	Regional	County Enhanced Bikeway	Medium	Yes, S28 (Tier 2)	<ul style="list-style-type: none"> Review project approach in TSP and update as necessary
5	Upton Road	Upton Road (east-west portion)	Regional	County Shared Roadway	Medium	Yes, S28 (Tier 2)	<ul style="list-style-type: none"> Change TSP bicycle route designation to enhanced bikeway Review project approach in TSP and update as necessary
14	Suncrest Road	Bear Creek Greenway to Autumn Ridge Drive	Regional	County Enhanced Bikeway	Medium	Yes, S94 (Tier 2)	<ul style="list-style-type: none"> Change TSP bicycle route designation to enhanced bikeway Review project approach in TSP and update as necessary
18	N Main Street	Laurel Street to E Main Street	Regional	ODOT Bikeway	High	No	<ul style="list-style-type: none"> Change TSP bicycle route designation to enhanced bikeway Review LTS and add project to TSP as necessary
18	Lithia Way	N Main Street to E Main Street	Regional	ODOT Bikeway	High	No	<ul style="list-style-type: none"> Change TSP bicycle route designation to enhanced bikeway Review LTS and add project to TSP as necessary
20	Shared-Use Path	Mountain Avenue to Maywood Way	Regional	Non-Designated	High	No	<ul style="list-style-type: none"> Add path to bicycle route designation map

RVATP Route	Roadway	Extents	RVATP Classification	TSP Bicycle Route Designation	RVATP Priority	TSP Project(s)?	TSP Update Needs
							<ul style="list-style-type: none"> Add path project to TSP
21	OR 66	Tolman Creek Road to Knoll Crest Drive	Regional	ODOT Bikeway	High	Yes, U2 (N/A ODOT)	<ul style="list-style-type: none"> Change TSP bicycle route designation to enhanced bikeway Review project approach in TSP and update as necessary
24	Gilman Road	Biddle Road to Western Terminus	Regional	Non-Designated	Medium	No	<ul style="list-style-type: none"> Change TSP bicycle route designation to enhanced bikeway Review LTS and add project to TSP as necessary
24	Shared-use Path	Western Terminus to Table Rock Road	Regional	Non-Designated	Medium	No	<ul style="list-style-type: none"> Add path to bicycle route designation map Add path project to TSP
25	Hamrick Road	Beebe Road to New Haven Road	Regional	Non-Designated	Low	No	<ul style="list-style-type: none"> Change TSP bicycle route designation to enhanced bikeway Review LTS and add project to TSP as necessary
25	Beebe Road	Gebhard Road to Hamrick Road	Regional	County Shared Roadway	Low	No	<ul style="list-style-type: none"> Change TSP bicycle route designation to enhanced bikeway Review LTS and add project to TSP as necessary
25	Shared-use Path	Bear Creek Greenway to Gebhard Road	Regional	Non-Designated	Low	No	<ul style="list-style-type: none"> Add path to bicycle route designation map Add path project to TSP
26	Antelope Road	Table Rock Road to Division Road	Regional	County Bikeway	Medium	No	<ul style="list-style-type: none"> Change TSP bicycle route designation to enhanced bikeway Review LTS and add project to TSP as necessary
26	Division Road	Antelope Road to new east-west path	Regional	County Bikeway	Medium	No	<ul style="list-style-type: none"> Change TSP bicycle route designation to enhanced bikeway

RVATP Route	Roadway	Extents	RVATP Classification	TSP Bicycle Route Designation	RVATP Priority	TSP Project(s)?	TSP Update Needs
							<ul style="list-style-type: none"> Review LTS and add project to TSP as necessary
26	Shared-Use Path	Division Road to Hale Way	Regional	Non-Designated	Medium	No	<ul style="list-style-type: none"> Add path to bicycle route designation map Add path project to TSP
27	Touville Road	Agate Road to western Terminus	Regional	Non-Designated (Private Road)	Low	No	<ul style="list-style-type: none"> Change TSP bicycle route designation to enhanced bikeway Add refinement plan project to TSP
27	Shared-use Path	Table Rock Road to Touville Road	Regional	Non-Designated	Low	No	<ul style="list-style-type: none"> Add path to bicycle route designation map Add refinement plan project to TSP
28	Shared-use Path	Touville Road to OR 62	Regional	Non-Designated	Low	No	<ul style="list-style-type: none"> Add path to bicycle route designation map Add refinement plan project to TSP
29	S Royal Avenue	Main Street to Lotto Street	Regional	County Bikeway	High	Yes, U37 (N/A City)	<ul style="list-style-type: none"> Change TSP bicycle route designation to enhanced bikeway Review project approach in TSP and update as necessary
31	Shared-Use Path	Blackwell Road to West Nevada Street	Regional	Bear Creek Greenway	High	No	<ul style="list-style-type: none"> No Action
34	Garfield Street	Holly Street † I-5	Regional	ODOT Bikeway	High	No	<ul style="list-style-type: none"> Change TSP bicycle route designation to enhanced bikeway Review LTS and add project to TSP as necessary
37	Shared-Use Path	Maywood Way to the South	Regional	Non-Designated	Medium	No	<ul style="list-style-type: none"> Add path to bicycle route designation map Add refinement plan project to TSP
38	Lowry Lane	OR 99 to Highgate Street	Regional	Non-Designated	High	No	<ul style="list-style-type: none"> Change TSP bicycle route designation to enhanced bikeway

RVATP Route	Roadway	Extents	RVATP Classification	TSP Bicycle Route Designation	RVATP Priority	TSP Project(s)?	TSP Update Needs
							<ul style="list-style-type: none"> Review LTS and add project to TSP as necessary Add RVATP concept to TSP
Connector Routes							
35	Beall Lane	Freeman Road to Green Park Drive	Connector	County Bikeway	Medium	Yes, R47 (N/A City)	<ul style="list-style-type: none"> Review project approach in TSP and update as necessary
35	Merriman Road	Green Park Drive to Jennah Lane	Connector	County Bikeway	Medium	No	<ul style="list-style-type: none"> Review LTS and add project to TSP as necessary
36	Freeman Road	Beall Lane to Rose Valley Drive	Connector	Non-Designated	Medium	No	<ul style="list-style-type: none"> Change TSP bicycle route designation to bikeway Review LTS and add project to TSP as necessary
38	OR 99	Garfield Street to Lowry Lane	Connector	ODOT Bikeway	High	No	<ul style="list-style-type: none"> Review LTS and add project to TSP as necessary
40	Kings Highway	South Stage Road to Experiment Station Road	Connector	Shared Roadway	Low	Yes, S55 (Tier 2)	<ul style="list-style-type: none"> Review project approach in TSP and update as necessary
40	Kings Highway	Experiment Station Road to Trinity Way	Connector	County Bikeway	Low	Yes, R50 (N/A City)	<ul style="list-style-type: none"> Review project approach in TSP and update as necessary
41	Shared-Use Path	South Stage Road to Sparrow Way	Connector	Non-Designated	Low	No	<ul style="list-style-type: none"> Add path to bicycle route designation map Add path project to TSP
42	Barnett Road	Stewart Avenue to Alba Dive	Connector	ODOT Bikeway	High	No	<ul style="list-style-type: none"> Review LTS and add project to TSP as necessary
43	Garfield Street	Oakdale Avenue to Kings Highway	Connector	Non-Designated	Low	No	<ul style="list-style-type: none"> Change TSP bicycle route designation to bikeway Review LTS and add project to TSP as necessary

RVATP Route	Roadway	Extents	RVATP Classification	TSP Bicycle Route Designation	RVATP Priority	TSP Project(s)?	TSP Update Needs
43	Cunningham Avenue	Dixie Lane to Lozier Lane	Connector	County Bikeway	Low	No	<ul style="list-style-type: none"> Review LTS and add project to TSP as necessary
46	McAndrews Road	Veneto Circle to Vista Pointe Drive	Connector	Non-Designated	Low	No	<ul style="list-style-type: none"> Change TSP bicycle route designation to bikeway Review LTS and add project to TSP as necessary
49	Biddle Road	Bear Creek Greenway Connection to Morrow Road	Connector	Non-Designated	High	No	<ul style="list-style-type: none"> Change TSP bicycle route designation to bikeway Review LTS and add project to TSP as necessary
50	Lawnsdale Road	Biddle Road to Terminal Spur Road	Connector	Non-Designated	Medium	No	<ul style="list-style-type: none"> Change TSP bicycle route designation to bikeway Review LTS and add project to TSP as necessary
50	Bullock Road	Terminal Spur Road to OR 62	Connector	County Bikeway	Medium	No	<ul style="list-style-type: none"> Review LTS and add project to TSP as necessary
53	Roberts Road	Corona Avenue to Serenity Drive	Connector	Non-Designated	High	No	<ul style="list-style-type: none"> Change TSP bicycle route designation to bikeway Review LTS and add project to TSP as necessary
54	Midway Road	Table Rock Road to Eastern Terminus	Connector	Non-Designated	Medium	No	<ul style="list-style-type: none"> Change TSP bicycle route designation to bikeway Review LTS and add project to TSP as necessary
55	Table Rock Road	Rogue River to I-5	Connector	Enhanced Bikeway	High	Yes, S95 (Tier 2), U27 (Tier 1 Long), R61 (Tier 2), R62 (Tier 1 Mid), R65 (Tier 2), R66 (Tier 2), R54 (Tier 1 Near)	<ul style="list-style-type: none"> Review project approach in TSP and update as necessary

RVATP Route	Roadway	Extents	RVATP Classification	TSP Bicycle Route Designation	RVATP Priority	TSP Project(s)?	TSP Update Needs
55	Table Rock Road	I-5 to Merriman Road	Connector	Non-Designated	High	Yes, R93 (NA City)	<ul style="list-style-type: none"> Review project approach in TSP and update as necessary
56	Wilson Road	Upton Road to Table Rock Road	Connector	Shared Roadway	Low	Yes, R36 (Tier 1 Long)	<ul style="list-style-type: none"> Review project approach in TSP and update as necessary
56	Upton Road	Upton Road (east-west) to Wilson Road	Connector	Shared Roadway	Low	Yes, S91 (Tier 2)	<ul style="list-style-type: none"> Review project approach in TSP and update as necessary
57	OR 99	Dean Creek Road to Scenic Avenue	Connector	ODOT Shared Roadway	High	No	<ul style="list-style-type: none"> Change TSP bicycle route designation to bikeway Review LTS and add project to TSP as necessary
57	OR 99	Scenic Avenue to Orth Drive	Connector	ODOT Bikeway	High	No	<ul style="list-style-type: none"> Review LTS and add project to TSP as necessary
57	OR 99	Beall Lane to Table Rock Road	Connector	ODOT Bikeway	High	No	<ul style="list-style-type: none"> Review LTS and add project to TSP as necessary
58	Sage Road	OR 99 to OR 238 (Rossanley Drive)	Connector	County Bikeway	High	Yes, R97 (N/A City)	<ul style="list-style-type: none"> Review project approach in TSP and update as necessary
59	Vilas Road	Singing Grass Drive to OR 62	Connector	County Bikeway	Low	Yes, R91 (N/A City)	<ul style="list-style-type: none"> Review project approach in TSP and update as necessary
59	Vilas Road	OR 62 to Foothill Road	Connector	Shoulder Bikeway	Low	Yes, R1 (Tier 2), R2 (Tier 1 Long)	<ul style="list-style-type: none"> Review project approach in TSP and update as necessary
60	McAndrews Road	Ross Lane to Sweet Road	Connector	County Bikeway	High	Yes, R89 (N/A City)	<ul style="list-style-type: none"> Review project approach in TSP and update as necessary Add refinement plan project to TSP Add RVATP concept to TSP
61	Central Avenue	OR 99 to OR 238	Connector	ODOT Bikeway	High	No	<ul style="list-style-type: none"> Review LTS and add project to TSP as necessary

RVATP Route	Roadway	Extents	RVATP Classification	TSP Bicycle Route Designation	RVATP Priority	TSP Project(s)?	TSP Update Needs
62	OR 99	Table Rock Road to OR 238	Connector	Non-Designated	High	No	<ul style="list-style-type: none"> Change TSP bicycle route designation to bikeway Review LTS and add project to TSP as necessary Add RVATP concept to TSP
63	OR 99	Table Rock Road to OR 238	Connector	Non-Designated	High	No	<ul style="list-style-type: none"> Change TSP bicycle route designation to bikeway Review LTS and add project to TSP as necessary Add RVATP concept to TSP
64	OR 99	Stewart Avenue to Laurel Street	Connector	ODOT Bikeway	High	No	<ul style="list-style-type: none"> Review LTS and add project to TSP as necessary
65	Talent Avenue	Gibson Street to Colver Road	Connector	Non-Designated	Medium	No	<ul style="list-style-type: none"> Change TSP bicycle route designation to bikeway Review LTS and add project to TSP as necessary
66	Oak Street	Eagle Mill Road to Nevada Street	Connector	Shared Roadway	Low	Yes, S13 (Tier 2)	<ul style="list-style-type: none"> Review project approach in TSP and update as necessary
66	Eagle Mill Road	Butler Creek Road to Eagle Mill Road	Connector	Shoulder Bikeway	Low	Yes, S46 (Tier 3)	<ul style="list-style-type: none"> Review project approach in TSP and update as necessary
67	Siskiyou Boulevard	Walker Avenue to Tolman Creek Road	Connector	ODOT Bikeway	Medium	No	<ul style="list-style-type: none"> Review LTS and add project to TSP as necessary Add RVATP concept to TSP
68	E Main Street	Walker Avenue to Tolman Creek Road	Connector	Enhanced Bikeway	Medium	Yes, R43 (N/A City)	<ul style="list-style-type: none"> Review project approach in TSP and update as necessary
69	Biddle Road	Hamrick Road to Cirrus Road	Connector	County Bikeway	Medium	No	<ul style="list-style-type: none"> Review LTS and add project to TSP as necessary
71	Shared-Use Path	Bear Creek Greenway to Phoenix Road	Connector	N/A	Low	No	<ul style="list-style-type: none"> Add path to bicycle route designation map

RVATP Route	Roadway	Extents	RVATP Classification	TSP Bicycle Route Designation	RVATP Priority	TSP Project(s)?	TSP Update Needs
							<ul style="list-style-type: none"> Add path project to TSP
72	Foothill Road	Delta Waters Road to Hillcrest Road	Connector	County Bikeway	Medium	Yes, R48 (N/A City), R49 (N/A City)	<ul style="list-style-type: none"> Review project approach in TSP and update as necessary
72	Phoenix Road	Barnett Road to Coal Mine Road	Connector	County Bikeway	Medium	Yes, R51 (N/A City)	<ul style="list-style-type: none"> Review project approach in TSP and update as necessary
72	Phoenix Road	Coal Mine Road to North Phoenix City Limits	Connector	Enhanced Bikeway	Medium	Yes, S56 (Tier 2)	<ul style="list-style-type: none"> Review project approach in TSP and update as necessary
73	Dutton Road	OR 62 to Shared-Use Path	Connector	N/A	Medium	Yes, S14 (Tier 3)	<ul style="list-style-type: none"> Review project approach in TSP and update as necessary
73	Shared-Use Path	Dutton Road to Northern Terminus of Atlantic Avenue	Connector	N/A	Medium	Yes, R75 (Tier 2)	<ul style="list-style-type: none"> Add path to bicycle route designation map Review project approach in TSP and update as necessary
73	Atlantic Avenue	Northern Terminus to OR 140	Connector	County Bikeway	Medium	No	<ul style="list-style-type: none"> Review LTS and add project to TSP as necessary
73	Foothill Road	Corey Road to Delta Waters Road	Connector	Shoulder Bikeway	Medium	Yes, S42 (Tier 1 Mid), S43 (Tier 1 Near)	<ul style="list-style-type: none"> Review project approach in TSP and update as necessary
74	Agate Road	Nick Young Road to Avenue G	Connector	Shared Bikeway	Low	No	<ul style="list-style-type: none"> Change TSP bicycle route designation to bikeway Review LTS and add project to TSP as necessary
74	Agate Road	Avenue G to Antelope Road	Connector	ODOT Shared Roadway	Low	Yes, R72 (Tier 3)	<ul style="list-style-type: none"> Review project approach in TSP and update as necessary
74	Nick Young Road	Agate Road to Hannon Road	Connector	Shared Bikeway	Low	Yes, R86 (Tier 2)	<ul style="list-style-type: none"> Review project approach in TSP and update as necessary

RVATP Route	Roadway	Extents	RVATP Classification	TSP Bicycle Route Designation	RVATP Priority	TSP Project(s)?	TSP Update Needs
76	Alta Vista Road	Robert Tret Jones Jr Boulevard to Bigham-Brown Road	Connector	County Bikeway	Low	No	<ul style="list-style-type: none"> Review LTS and add project to TSP as necessary
77	5t Street	California Street to Jacksonville City Limits	Connector	ODOT Bikeway	High	No	<ul style="list-style-type: none"> Review LTS and add project to TSP as necessary
77	OR 238	Jacksonville City Limits to Main Street	Connector	ODOT Shared Roadway	High	No	<ul style="list-style-type: none"> Change TSP bicycle route designation to bikeway Review LTS and add project to TSP as necessary
77	Main Street	OR 238 to Renault Avenue	Connector	Enhanced Bikeway	High	Yes, S29 (Tier 2)	<ul style="list-style-type: none"> Review project approach in TSP and update as necessary
79	Pine Street	Rachel Drive to Glenn Way	Connector	County Bikeway	High	Yes, R55 (N/A City)	<ul style="list-style-type: none"> Review project approach in TSP and update as necessary
80	California Street	Stagecoach Drive to Wells Fargo Drive	Connector	Shoulder Bikeway	Medium	Yes, S25 (Tier 2)	<ul style="list-style-type: none"> Review project approach in TSP and update as necessary
80	South Stage Road	Wells Fargo Drive to Griffin Creek Road	Connector	Shoulder Bikeway	Medium	Yes, S25 (Tier 2)	<ul style="list-style-type: none"> Review project approach in TSP and update as necessary
80	Griffin Creek Road	South Stage Road to South Stage Road	Connector	Shoulder Bikeway	Medium	Yes, S25 (Tier 2)	<ul style="list-style-type: none"> Review project approach in TSP and update as necessary
80	South Stage Road	Griffin Creek Road to Eastern Terminus	Connector	Shoulder Bikeway	Medium	Yes, S25 (Tier 2)	<ul style="list-style-type: none"> Review project approach in TSP and update as necessary
81	Pine Street	Rachel Drive to Southern Terminus	Connector	County Bikeway	Low	Yes, R58 (N/A City)	<ul style="list-style-type: none"> Review project approach in TSP and update as necessary
81	Hanley Road	Northern Terminus to Beall Lane	Connector	County Bikeway	Low	Yes, R46 (Tier 3)	<ul style="list-style-type: none"> Review project approach in TSP and update as necessary

RVATP Route	Roadway	Extents	RVATP Classification	TSP Bicycle Route Designation	RVATP Priority	TSP Project(s)?	TSP Update Needs
81	Hanley Road	Beall Lane to OR 238 (Rossanley Drive)	Connector	County Bikeway	Low	Yes, S44 (Tier 2)	<ul style="list-style-type: none"> Review project approach in TSP and update as necessary
81	OR 238	OR 238 (Rossanley Drive) to Main Street	Connector	ODOT Shared Roadway	Low	No	<ul style="list-style-type: none"> Change TSP bicycle route designation to bikeway Review LTS and add project to TSP as necessary
82	Ross Lane	OR 238 (Rossanley Drive) to Thorn Oak Drive	Connector	County Bikeway	Medium	No	<ul style="list-style-type: none"> Review LTS and add project to TSP as necessary
82	Lozier Lane	Main Street to Stewart Avenue	Connector	County Bikeway	Medium	Yes, R59 (Tier 1 Near)	<ul style="list-style-type: none"> Review project approach in TSP and update as necessary
82	Orchard Home Drive	Cunningham Avenue to South Stage Road	Connector	County Bikeway	Medium	Yes, R92 (N/A City)	<ul style="list-style-type: none"> Review project approach in TSP and update as necessary
83	Columbus Avenue	Garfield Street to South Stage Road	Connector	County Bikeway	Medium	No	<ul style="list-style-type: none"> Review LTS and add project to TSP as necessary
Supporting Routes							
21	OR 66 (Ashland Street)	Rail Line to Tolman Creek Road	Supporting Route	ODOT Bikeway	High	No	<ul style="list-style-type: none"> Review LTS and add project to TSP as necessary
21	OR 66	Knoll Crest Drive to Dead Indian Memorial Road	Supporting Route	ODOT Bikeway	High	No	<ul style="list-style-type: none"> Review LTS and add project to TSP as necessary
26	Antelope Road	Hale Way to 26 th Street	Supporting Route	County Bikeway	Medium	No	<ul style="list-style-type: none"> Review LTS and add project to TSP as necessary
65	Clover Road	Talen Avenue to OR 99	Supporting Routes	Shoulder Bikeway	Medium	Yes, U39 (Tier 2)	<ul style="list-style-type: none"> Review project approach in TSP and update as necessary
74	ODOT	Hannon Road to OR 62	Supporting Route	ODOT Bikeway	Low	No	<ul style="list-style-type: none"> Review LTS and add project to TSP as necessary